



# ANAHITA

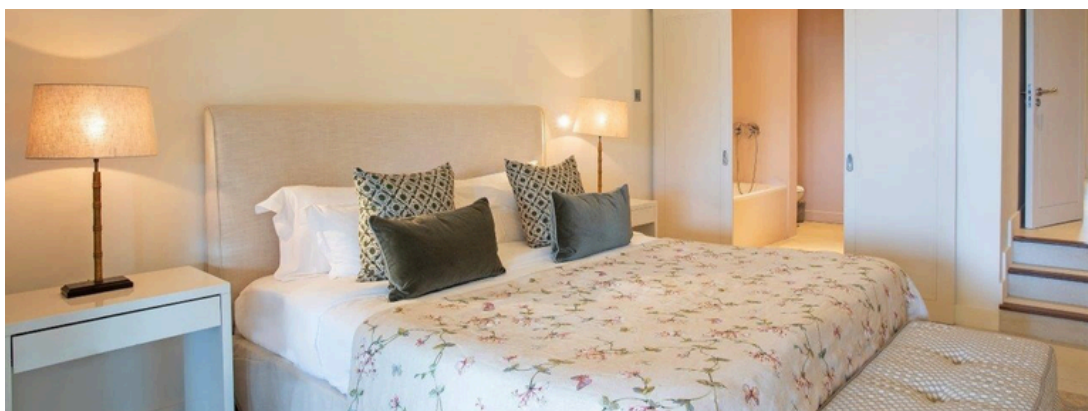


GOLF RESORT

## L'ADAMANTE APARTMENTS - SEA VIEW

This first development phase of the Anahita estate is composed of 46 units built along the lagoon. They boast 2 to 3 en-suite bedrooms, storage space as well as a convivial living-cum-dining room opening onto a large covered terrace with lounge area and plunge pool.

Located a few hundred metres away from the Anahita Golf & Spa Resort centre and the Golf Club, these apartments combine comfort, space and luxury.



**181 to 215 m<sup>2</sup>**  
GROSS SIZE



**2 to 3**  
BEDROOMS



VIEW **Golf**



**2 to 3**  
BATHROOMS

**AS FROM USD 1,035,000**

*including the furniture but excluding the fees & taxes (net price)*