

ANAHITA



BEAU CHAMP

Price List - March 2025 L'Écho des Champs - Apartments & Penthouses

Apartments

Unit	Floor	Bedrooms	Bathrooms	Size (m ²)	Price (MUR)	Price (EUR)	Price (USD)
A1	Ground Floor	3	2	190.2	RESERVED		
A2	Ground Floor	2	2	174.1	RESERVED		
A3	Ground Floor	3	2	190.2	RESERVED		
A4	Ground Floor	2	2	174.1	26,962,000	563,000	588,000
A5	Ground Floor	2	2	174.1	RESERVED		
A6	Ground Floor	3	2	190.2	RESERVED		
A7	First Floor	3	2	191.9	RESERVED		
A8	First Floor	2	2	175.7	RESERVED		
A9	First Floor	3	2	191.9	RESERVED		
A10	First Floor	2	2	175.7	26,306,000	550,000	574,000
A11	First Floor	2	2	175.7	RESERVED		
A12	First Floor	3	2	191.9	RESERVED		

Penthouses

Unit	Floor	Bedrooms	Bathrooms	Size (m ²)	Price (MUR)	Price (EUR)	Price (USD)
A13	Second Floor	3	3	299.5	RESERVED		
A14	Second Floor	3	3	299.5	51,000,000	1,065,000	1,112,000
A15	Second Floor	3	3	299.5	51,000,000	1,065,000	1,112,000



ANAHITA



BEAU CHAMP

Notes :

- 1) The base price/currency is the Mauritian Rupee (MUR) and the EUR/USD figures are indicative only (conversion rate used is the Buying TT of The Mauritius Commercial Bank Ltd on the date this price list was issued).
- 2) The price excludes the registration duty (5%) and the notary fees.
- 3) The size refers to the Gross External Area (GEA) in square meters.
- 4) The apartments and penthouses are available off-plan (VEFA). Their prices are payable in various instalments in accordance with the VEFA scheme.
- 5) Price valid until 30th April 2025.

This price list is indicative and non contractual.

Anahita Beau Champ Limited reserves the right to modify any contents of the price list, without prior notice or liability.

Anahita Beau Champ Limited

Registered Office: 5th Floor, Ebene Skies, Rue de l'Institut, Ebene, Mauritius

Tel: (230) 404 2200 / Fax: (230) 404 2201

Administrative Office: Vivéa Business Park, Saint Pierre 81430, Mauritius

Tel: (230) 402 9050 / Fax: (230) 432 0729

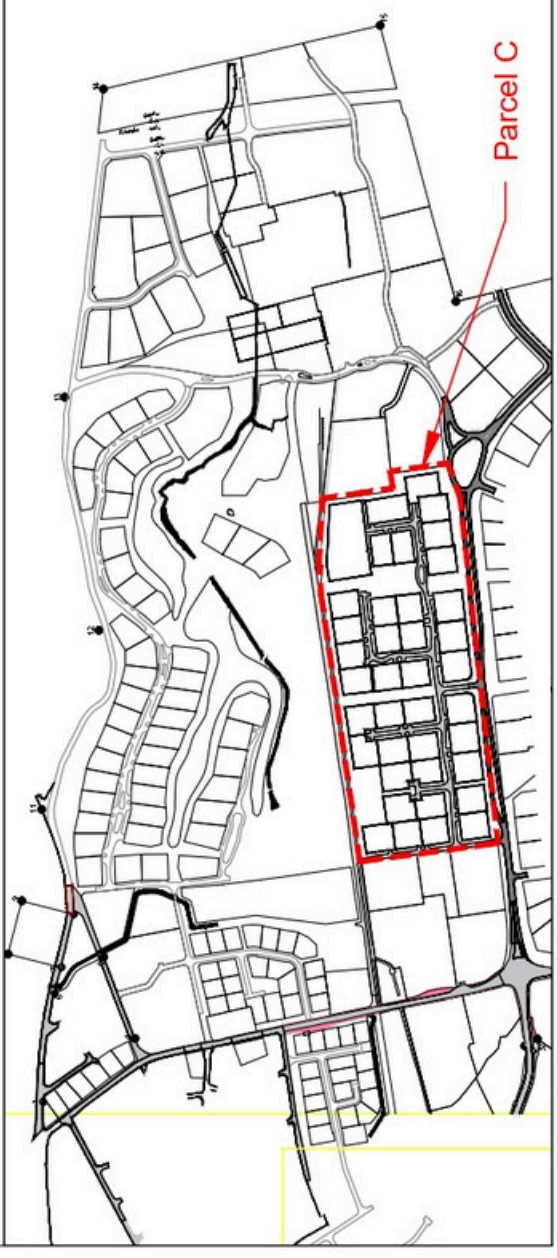
BRN: C22188962

PALM ALLEY

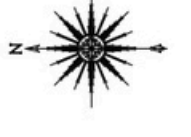
CANAL



AREA: Parcel C



Notes & Legend



- xxx + Finish Dimension
- xxx - Structural Dimension

ANAHITA

BEAU CHAMP

Rev	Date Revised	Description
		CRP

Bifrost LTD
 from concept to better living
 THE HIVE, PRIVATE OFFICE 7
 ROYAL ROAD, PIERREFONDS,
 QUATRE BORNES MU 7248
 4001 4th Floor, 5256 5266
 email: info@bifrost.mu
 BRN: C19169644 VAT No: 27766715

Client:	ANAHITA BEAU CHAMP LIMITED			
Project:	ANAHITA BEAU CHAMP			
Area:	SITE PLAN - L'echo des champs			
Title:	L'echo des champs			
Date Created	Checked By	Drawn By:	Format:	Scale:
Project Ref:	202003 - ANA	ANA_SP_000	A2	NTS



APARTMENT BLOCK A - GROUND FLOOR - PLOT CP1
 PLOT AREA : 4,343 m²



Notes & Legend

This Document & its Contents are the Copyright of the Designer.

- Furniture for information only (not included in selling price).
- The blocks may be mirrored to suit plot specific conditions.

+ xxx + Finish Dimension
+ xxx + Structural Dimension

ANAHITA

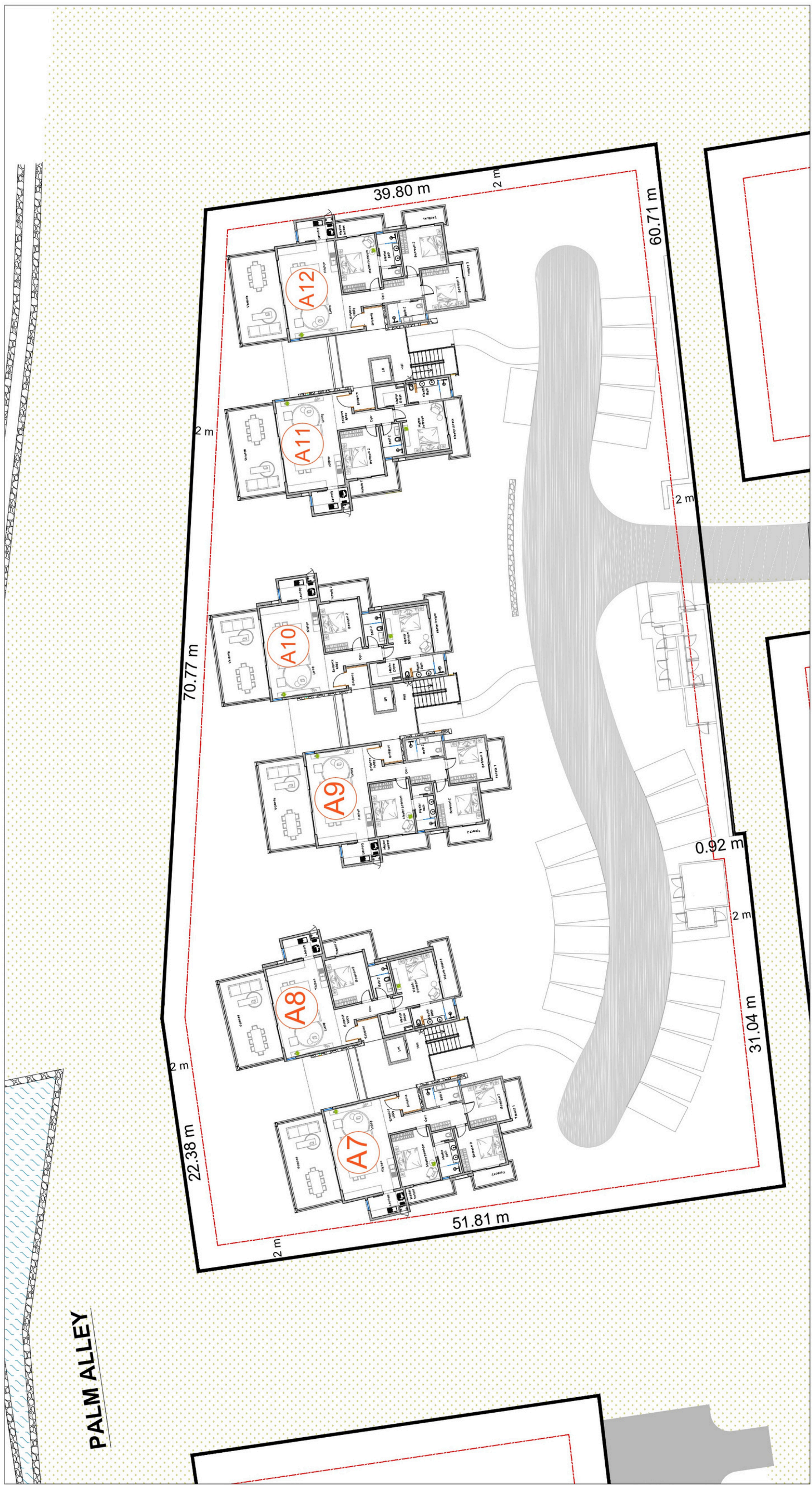
BEAU CHAMP

Rev	Date Revised	Description
		CRP

Berengère Croizieu
 Architecte DPLG
 Registration No: 186
 BC Architect Ltd
 ROCHES NOIRES, ILE MAURICE
 Tel: M (230) 5252 6327
 email: berengerecroizieu@gmail.com
 website: www.bc-architect.com
 BRN: C13119090 VAT No: 20142999

BIFROST LTD
 from concept to better living
 THE HIVE, PRIVATE OFFICE 7
 ROYAL ROAD, PIERREFONDS,
 QUATRE BORNES MU 72248
 Tel: (230) 460 0440 - M: (230) 5256 5266
 email: jlm@bifrost.mu
 BRN: C19169644 VAT No: 27766715

Client:	ANAHITA BEAU CHAMP LIMITED		
Project:	ANAHITA BEAU CHAMP		
Area:	SITE PLAN APARTMENTS		
Title:	BLOCK A - GFP ON PLOT CP1		
Date Created	Checked By	Drawn By	Format
			A2
Scale:	NTS		
Project Ref:	202003 - ANA	Drawing N°	ANA_CP1_GFP_001
Rev			



APARTMENT BLOCK A - FIRST FLOOR - PLOT CP1
 PLOT AREA : 4,343 m²



Notes & Legend

This Document & its Contents are the Copyright of the Designer.

- Furniture for information only (not included in selling price).
- The blocks may be mirrored to suit plot specific conditions.

+ xxx + Finish Dimension
+ xxx + Structural Dimension

ANAHITA

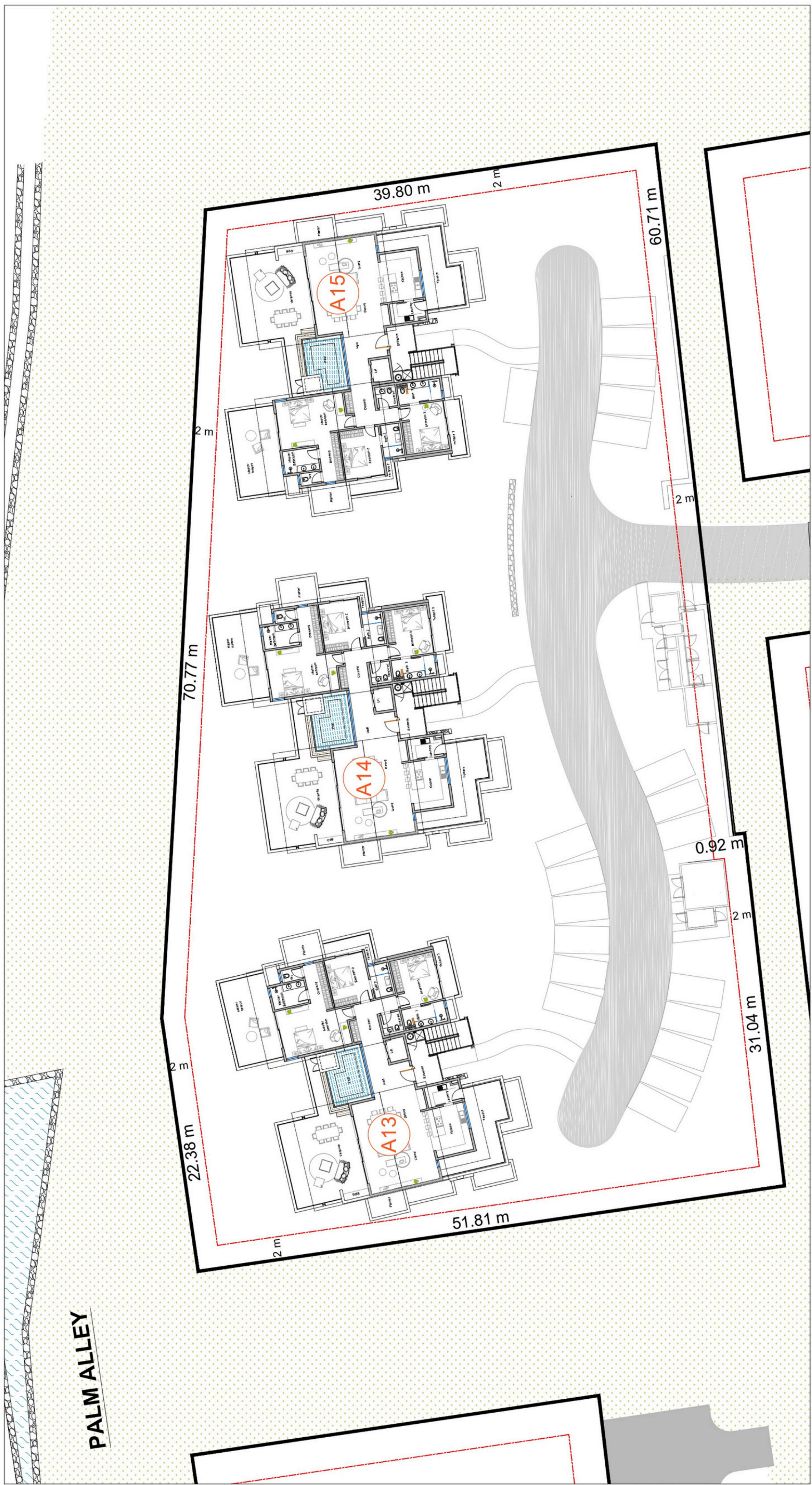
BEAU CHAMP

Rev	Date	Revised	Description
			CRP

Berengère Croizieu
 Architecte DPLG
 Registration No: 186
 BC Architect Ltd
 ROCHES NOIRES, LE MAURICE
 Tel: M (230) 5252 6327
 email: berengerecroizieu@gmail.com
 website: www.bc-architect.com
 BRN C13119090 VAT No: 20142999

BIFROST LTD
 from concept to better living
 THE HIVE, PRIVATE OFFICE 7
 ROYAL ROAD, PIERREFONDS,
 QUATRE BOIRES NU 2248
 Tel: (230) 4600 1230 5256 5266
 email: june@bifrost.me
 BRN: C19169644 VAT No: 27766715

Client:	ANAHITA BEAU CHAMP LIMITED		
Project:	ANAHITA BEAU CHAMP		
Area:	SITE PLAN APARTMENTS		
Title:	BLOCK A - FFP ON PLOT CP1		
Date Created	Checked By	Drawn By	Format
			A2
Scale:	NTS		
Project Ref	202003 - ANA	Drawing #	ANA_CP1_FFP_002
Rev			



APARTMENT BLOCK A - SECOND FLOOR - PLOT CP1
 PLOT AREA : 4,343 m²



Notes & Legend

This Document & its Contents are the Copyright of the Designer.

- Furniture for information only (not included in selling price).
- The blocks may be mirrored to suit plot specific conditions.

+ xxx + Finish Dimension
+ xxx + Structural Dimension

ANAHITA

BEAU CHAMP

Description

CRP

Barchitect

bifrost
 from concept to better living

BIFROST LTD
 from concept to better living
 THE HIVE, PRIVATE OFFICE 7
 ROYAL ROAD, PIERREFONDS,
 QUATRE BORNES MU 7248
 Tel: (230) 460 0440 - Fax: (230) 5256 5266
 email: jfm@bifrost.ltd
 BRN: C19169644 VAT No: 27766715

Client:	ANAHITA BEAU CHAMP LIMITED				
Project:	ANAHITA BEAU CHAMP				
Area:	SITE PLAN APARTMENTS				
Title:	BLOCK A - SFP ON PLOT CP1				
Date Created	Checked By	Drawn By	Format	Scale	
			A2	NTS	
Project Ref	202003 - ANA	Drawing N°	ANA_CP1_SFP_003		
Rev					